

WORKSHOP

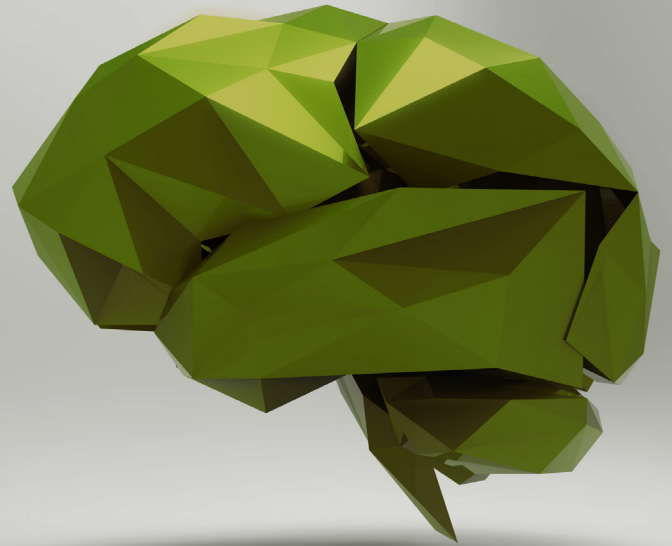
# MODELLING DATA

MARCELLO GALLUCCI

UNIVERSITY OF MILANBICOCCA

5, 6 AND 7 JULY 2016

ROOM 108 | ISPA - INSTITUTO UNIVERSITARIO



## PROGRAM

5TH JULY 2016 > 10.00H-13.00H - CLASS 1

### A MODERATED VIEW OF THE LINEAR MODEL

3 hours – theory based

This class reviews the most interesting and advanced parts of the General Linear Model (GLM). In particular, moderation with continuous and categorical independent variables, contrast analysis, mediation and moderated mediation. It also lays down the basic principles of the generalization of the GLM to be tackled in the other classes.

6TH JULY 2016 > 10.00H-13.00H - CLASS 2

### A MIX WITHIN

3 hours – theory based

The mixed linear models – also called random effects models, hierarchical linear models or multi-level models – is analyzed with particular attention to its applications to repeated measures designs and longitudinal designs. The aim of the class is to generalize the GLM to advanced and complexly structured research designs.

6TH JULY 2016 > 14.00H-17.00H - CLASS 2B

### PRACTICE MAKES PERFECT

3 hours – practical skills – computer room

The GLM and the mixed linear model applications are shown with examples of real data and analyzed by students with the available software (SPSS). The class is "hands-on" so the aim is to overview practical problems and best practices of the analysis of data.

7TH JULY 2016 > 10.00H-13.00H - CLASS 3

### COUNT ON ME

3 hours – theory based

In this class the generalized linear model is discussed. This allows students to familiarize with logistic models, multinomial and Poisson analyses, in order to analyze data with categorical and count dependent variables. The aim is to show how the concepts studied in the GLM easily apply to research problems involving categorical variables.

7TH JULY 2016 > 14.00H-17.00H - CLASS 3B

### PRACTICE MAKES PERFECT 2

3 hours – practical skills – computer room

The generalized linear model and its random effects version is discussed with example of real data and analyzed by students with the available software (SPSS). The class is "hands-on" so the aim is to overview practical problems and best practices of the analysis of data.

---

INFORMATION/REGISTRATION  
UE@ISPA.PT | ISPA.PT/WJCR-WORKSHOP-2016

---

ISPA



WILLIAN JAMES  
CENTER  
FOR RESEARCH

FCT

Fundação para a Ciência e a Tecnologia  
MINISTÉRIO DA EDUCAÇÃO E CIÊNCIA